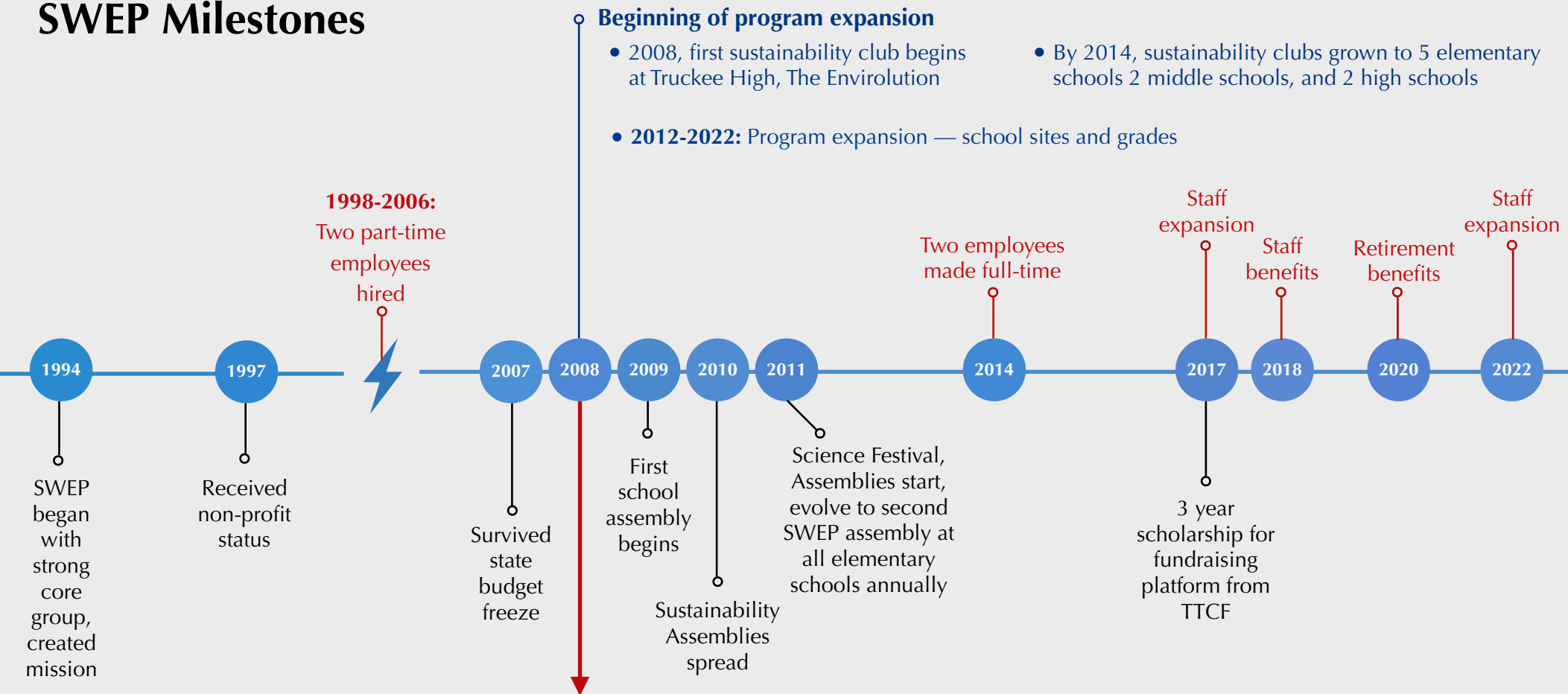


SWEP Milestones



Expand and Diversify Funding Partnerships

- 2008: Winter Programming begins in partnership with Tahoe Cross Country through Excellence in Education Funding
- 2009: Grants through Tahoe Truckee Community Foundation
- 2010: Partnership with the Town of Truckee and Truckee Donner Public Utility District; then others: North Tahoe Public Utility District, Tahoe City Public Utility District, and Tahoe Truckee Sierra Disposal
- 2012: Partnership with CLIF Bar Family Foundation begins
- 2014: First Tahoe Truckee Unified School District annual contract (Sustainability Clubs)
- 2017: Second Tahoe Truckee Unified School District annual contract (Waste Management)
- 2019: Partnership with Tahoe Mountain Resorts Foundation; contracts expand with Truckee River Watershed Council
- 2020: Partnership with Placer County; expansion with Excellence in Education and CLIF Bar Family Foundation
- 2022: Partnership with Truckee Tahoe Airport Community Partner and The Patchwork Collective Family Foundation

* Prior to 2009 (1997-2008), funding was primarily through state grants